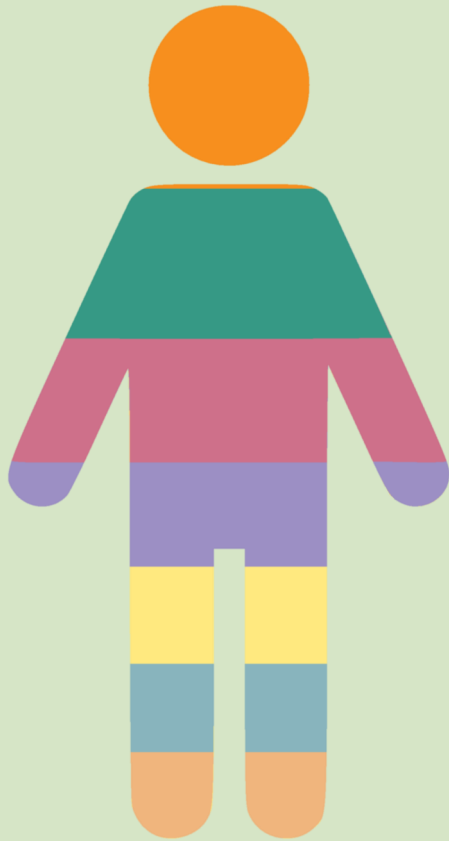




234 Interventions:



19% **Employment**

18% **Mental Health**

16% **Training**

14% **Money**

12% **Signposting**

11% **Lifeskills**

10% **Accommodation**



3 retail sites



20 partners worked with regularly

We are a
Living Wage
Employer



42 Companions volunteering



5 Companions were supported into housing, of whom 3 were street homeless



31 Companions moved into employment



60% of our costs are covered by our own trading income and we have no statutory funding

All money raised in Suffolk stays in Suffolk

Dominique's Story



Emmaus Suffolk has also helped me beat my depression, by meeting people and socialising.

Dominique, 48, starting coming to Emmaus Suffolk in June 2018.

She is classified as disabled and unable to work, formerly she owned a beauty salon. She found being unable to work left her isolated and lonely at home.

Dominique said: "Coming here stopped me from being alone and really helped me to feel part of my community again, coming here means I am not isolated and alone at home. It feels like a family here and people are very tolerant.

I don't feel so alone coming here, I don't have to explain myself on the bad days but companions look out for each other and there is always support."

Dominique has completed the customer service and retail course offered at Emmaus Suffolk, accredited by Derby College.

Dominique is currently completing the Mental Health awareness course NVQ Level 2 and volunteers in the coffee shop and running the till in the retail store we operate.

Valentine's Story

Valentine, 55, came to Emmaus Suffolk as a companion on a day release scheme; we provide long-term day release placements for prisoners from Hollesley Bay Prison.

During a nine month placement with Emmaus Suffolk he worked in a range of roles at the Dales, Ipswich including working in the up-cycling workshop, running the till, supporting the coffee shop, restocking and pricing donations.

Valentine said: "Joining the team at Emmaus Suffolk has made a huge difference in my life, the team there are like a family to me, there is no them and us – just us".

Valentine was released from Prison in July 2018 and gained a place at Emmaus Greenwich with residential accommodation. Valentine is currently completing a Masters degree with Anglia Ruskin University.

He is looking to gain a job in project management and exploring starting his own business within the shipping industry.

He has not re-offended and his future is looking very positive.

After a long time of sad experiences my work here has really helped me improve my sense of self-worth.



Future Plans:

House Clearance project:

Development of a social enterprise based on a house clearance business the intended outcomes being:

- Primarily to enhance the opportunity for non-residential companions to gain different work experiences .
- To generate additional income which will contribute to the self sufficiency of Emmaus Suffolk

Micro Housing project:

Development of a social housing model for 3 residential companions.

- A housing opportunity that offers a holistic approach to accommodation, support and meaningful activities.
- "As a tenant you will have more than a roof you will have a home."