

Community Newsletter

July 2020



emmaus
Cambridge
working together to end homelessness



We are open!

After 12 weeks of being closed, on the 24th of June we were finally able to open our doors again

working together to end homelessness

Open for business

After a long 12 weeks of being closed, we were finally able to open our doors to the public on the 24th of June.

A massive thank you to everyone who has visited since we reopened. All of the companions and staff team are excited to be back and have really enjoyed seeing so many familiar faces.

The landscape of Emmaus Cambridge has changed to ensure we abide by government guidelines and we appreciate everyone for sticking to the rules that have been put in place.

When you do visit us, please wear a face covering if possible and be aware of the one way system.

We have brand new toilets, which were finished during our closure and the main shop has been redecorated.

We have received an enormous amount of donations since reopening and the team have been very busy sorting through it all. All donations are quarantined for 72 hours in our marquees prior to being sorted and put in the shop for sale.



How does our Garden grow?

Very well!

Not being open to the public and only taking a minimum amount of donations meant that we had more time to devote to our lovely gardens and the results speak for themselves.

The existing garden team worked hard all through 'lockdown' and were joined by other companions, some with little or no gardening experience, to ensure that our gardens will be green, colourful and well stocked with home grown produce this summer.

We have got a proper composting system in place too so we can now 'feed our soil' without buying in additional nutrients.

It is well documented that gardening is good for one's mental health and this has proved true at Emmaus Cambridge. We have had 'this kiss of the sun for pardon and the song of the birds for mirth'. We have enjoyed the feeling of putting our hands into warm soil and watching as the little green shoots turn into flowers and vegetables for us, and you, to enjoy.

Unfortunately our main garden is closed to the public at the moment as those companions who still need to shield work there but you can see over the fence what we have done and are still doing, we look forward to seeing you.

The garden team



Companion Creations

There are some very talented people in the Emmaus communities and Cambridge certainly has its share of them.

Some of the people who live in Emmaus communities felt their lives were worthless and that they had been 'thrown away' by society. Now as companions, they know just how valuable they really are.

Sean (pictured above), who is usually one of our companion drivers, has had his hours reduced due to the virus and apart from his work with the solidarity team, has had a bit of time on his hands.

This incredibly talented man has been making the most amazing lamps out of all sorts of objects, some of which would almost certainly have ended up in the bin if he had not got his creative hands on them.

All the lamps are P.A.T tested and each one is unique. They lamps are now available to purchase in our shop.

The above prints have been produced using original drawings from companion Stuart.

Stuart is a keen artist and has been drawing since he was just 10 years old.

All prints are available to purchase in our shop. Different sizes or formats can be made on request.

All the money raised from the sale of any companion creation goes to Emmaus Cambridge.

Upcycling Furniture

We receive many items of furniture which require some TLC. Luckily, we are able to put our skills to good use and lovingly restore and upcycle them to sell in our shop.

Additionally, some of our companions often create bespoke items of from scratch in our workshop.





Emmaus Reboot

We started the new arm of Emmaus Cambridge in 2019, which has helped many people gain access to affordable IT equipment.

After a few months off, due to Covid-19, Emmaus Reboot are now back and looking to supply affordable PC bundles to those in need.

Our ultimate aim is to provide families, who may not be able to afford a computer, with a full PC bundle at an affordable price. This is particularly important at a time when many people are working from home and children require a computer to be able to do their school work.

We offer PC bundles at varying prices, starting from just £25.00.

Support Emmaus Cambridge

Donate to us

We rely heavily on your donated items.

Donations can be dropped off, Wednesday-Sunday from 10am until 4pm.

If you would like to make a cash donation, please visit our website. Thank you!

Shop with us

Our social enterprise is located in Landbeach, Green End CB25 9FD. Our eBay store can be found here www.ebay.co.uk/str/emmauscambidge

Follow us

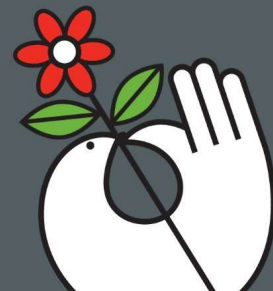
Please follow us on social media and check our website for regular updates. You can sign up to receive our monthly newsletter on our website.

Get in touch

Call 01223 863657 or visit us at www.emmaus.org.uk/cambridge

 CambridgeEmmaus  EmmausCambridge  EmmausCambridge

Emmaus Cambridge is a charity registered in England and Wales (1064473).



Created in RightMarket