

Community Newsletter

June 2020



emmaus
Cambridge
working together to end homelessness



The community comes together

Despite the difficult period, the community continues to work towards re-opening.

working together to end homelessness

Thank you!

Since we had to close our doors in March, we have received amazing support, in various forms. Below are just some of the people who have helped during this difficult period.

We have received some amazing food donations, which has helped reduce our food bill.

FareShare have been making additional deliveries.

M&S at the Beehive Centre and Market square in Cambridge have been putting together donations for us to collect on a weekly basis. Cambridge Foodbank have not only been donating food but also recently donated an amazing £1000 to help the community.

We have also received regular food donations from Scottsdales Garden centre, Nando's and Tesco. All this has been possible by connecting to local businesses through Neighbourly.com.

We are extremely grateful for to have some fantastic supporters who have been fundraising.

Year 9 students from the Perse School raised an incredible £3,425 from their sponsored sleep-out, which was done in their garden's.

Deborah raised money by making people face masks.

The 2.6 challenge was taken on by some of you. Rebecca and Zeke (the dog) walked 26 miles in 26 days. Sam and Daisy ran 13 miles in 5 runs. Arabella and Hugo skipped and cycled.

Dan and Rachael ran 26 laps of their garden.

Employee Mark decided to move into the community for 2 months and 6 days to help out.

Finally, 26 of the community, including staff and companions, walked 26 miles around the site.

Without the support of everyone mentioned,



Cambridge.

everyone at Emmaus

plus many others, we would not be able to survive. Thank you so much from



Helping our neighbours

Our community lies between the villages of Landbeach and Waterbeach and we try to help our neighbours whenever we can.

The village of Landbeach has no shop. Even before the coronavirus outbreak it was difficult for some villagers to get shopping if they did not have a car as there is only a very limited bus service.

Now of course, things are even more difficult. Many Landbeach residents are elderly, many do not have cars and are frightened of using what public transport there is. There is also a small but significant amount of poverty in the village. The virus is making it very hard for some people to get food.

Lately we have been helping our friends the Landbeach community by donating surplus food to the 'Community Cupboard' which is located in the porch of the parish church of All Saint's.

Food is thus made available, without charge, to anyone who needs it 24 hours a day.



Being furloughed

Here Rachel, part of the operations team, gives an insight into furloughed life.

It has been hard to adjust from leaving the house just after 7 am and returning at 6pm to endless time at home. All the time in the world but unable to see family or friends. We miss the daily 'Emmaus Chaos', the daily team banter, the Companions who have got to know us so well and the shared laughs and jokes amongst the hard work that made the days whizz past.

I miss Emmaus meals and the friendly faces of our customers. It's hard to feel you are now separate from the staff that remain working, and feel somewhat out of touch.

There are mixed feelings as at the same time grateful to live in the countryside with a garden, to not be ill and to keep in touch as best we can. Grateful to know we have money coming in through the furlough scheme. We know Emmaus will pull together and come out the other side. I am longing to be studying a rota and trying to work out how to fit stuff into my days off!!

26 answer 26

Alongside our 26 mile walk for the 2.6 challenge, we thought it would be a nice idea to get 26 people to answer 26 questions. Staff and companions have been answering the 26 questions which are being posted on our website daily. This is a great chance to get to know those who make the community what it is.

www.emmaus.org.uk/cambridge/26-answer-26/





Enjoying the weather together

Despite the difficult circumstances, the community are keeping positive by enjoying the beautiful weather and each others company. We recently enjoyed a community BBQ, which everyone enjoyed.

The experienced and the not so experienced gardeners have been working together to ensure that our garden and community grounds remain an inviting place to visit. Thanks to our new sewage a system, the main field is now accesible and a path has been created for a walk through the woodland area.

Support Emmaus Cambridge

Donate to us

The current Covid-19 situation poses a significant risk to Emmaus Cambridge, and a donation from you will help us to continue our vital work during this crisis. We know times are tough for everyone at the moment, and we're all working hard to find a way through this. Thank you for your support.

Shop with us

Despite our shop being temporarily shut, our eBay store remains open here www.ebay.co.uk/str/emmauscambidge

Follow us

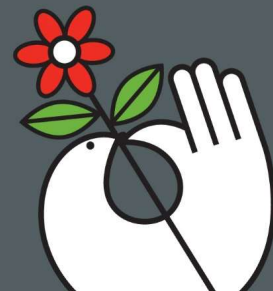
Please follow us on social media and check our website for regular updates.

Get in touch

Call 01223 863657 or visit us at www.emmaus.org.uk/cambridge

 CambridgeEmmaus  EmmausCambridge  EmmausCambridge

Emmaus Cambridge is a charity registered in England and Wales (1064473).



Created in RightMarket